

INDIAN STOCK MARKET STOCKDUNIA



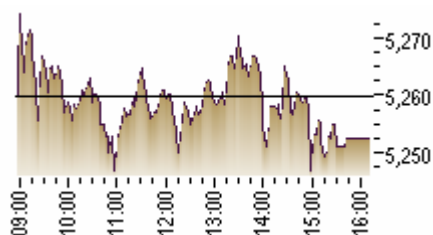
YOUR SATISFACTION IS OUR REWARD



WEEKLY JOURNAL

18.01.2010

NIFTY



MARKET OVERVIEW

FOR 18th JANUARY 2010 TO 24th JANUARY 2010

WRITTEN IN PREVIOUS ISSUE

WE HAVE WRITTEN THAT IT IS REQUIRED A DIPS OTHERWISE MARKET WILL NO GET MOMENTUM AND 5180 TO 5160 IS GOOD BUYING ZONE.MARKET REBOUND FROM 5170 LEVEL AND MADE A HIGH AROUND 5300 LEVEL AND FINALLY CLOSE AT 5252 LEVEL.

GLOBAL INDICES

INDEX	CURRENT	CHANGE
Nasdaq	2287.99	1.24
DJIA	10609.65	0.94
S&P 500	1136.03	1.08
Hang Seng	21654.16	0.29
Nikkei 225	10982.1	0.68

WHAT THE CHART SAYS

IN THE LAST WEEK NIFTY WAS IN A RANGE OF 5170 TO 5300 WITH VERY LOW VOLUME.HOWEVER AS PER TECHNICAL ANALYSIS WE CAN SAY NIFTY IS IN UPTREND IN CAUTIOUS MODE .IT IS TRUE THAT NIFTY MADE A NEW HIGH BUT UNABLE TO CLOSE ABOVE NEW HIGH 5312.AS THE MARKET IS IN COSOLIDATION ZONE AND IN A RANGE BOUND.UNLESS OTHERWISE NIFTY CROSSES THIS RANGE NIFTY WILL NOT TAKE ANY FRESH MOVEMENT EITHER SIDES.FOR THE TIME BEING NIFTY IS IN A RANGE OF 5170 TO 5300.AS PER TECHNICAL POINT OF VIEW UNLESS NIFTY CLOSE ABOVE 5312 ZONE NIFTY WILL NOT TAKE BREAKOUT AND UNLESS NIFTY CLOSE BELOW 5129 NIFTY WILL NOT TAKE BREAKDOWN.

SO IT IS REQUIRED DIPS AND EVERY DIPS IS BUYING OPPORTUNITY UNLESS NIFTY CLOSE BELOW 5129 LEVEL.NOW DISCUSS WHAT IS THE GOOD BUYING ZONE AND WHAT STOP LOSS SHOULD BE MAINTAINED.

HOT STOCKS IN COMING DAYS

NIFTY -SUPPORT

STOCKS	CURRENT	COMMENT
HINDCOPPER	432	BUY
NELCO	120	BUY
MADRASFERT	14	BUY
MUKTAARTS	76	BUY
THE ABOVE STOCKS ARE LOOKING HOT.BUY ON EVERY DIPS .		

1) VITAL SUPPORT 5220 UNLESS BREAKS NO PROBLEM
2) IF BREAK 5220 THEN YOU WILL GET FIRST SYMPTOM THAT MARKET LIKELY TO TEST 5200 AND 5170 LEVEL. THESE TWO SUPPORTS ARE VERY GOOD BUYING ZONE.SO WE AGREE TO BUY ON DIPS KEEPING 5129 AS STOP LOSS BY CLOSING FOR TWO DAYS.

BUDGET SPECIAL

LIKE EVERY YEAR OUR BUDGET SPECIAL JOURNAL WILL BE PUBLISHED AT THE END OF JANUARY AND IN THE MONTH OF APRIL BY TWO SEGMENTS.THESE INVESTMENT PICS WILL YIELD RETURN FROM 20 % TO 60%.AS THIS YEAR MARKET RECOVERD HUGH FROM VERY LOW LEVEL.THESE STOCKS YIELD RETURN MORE THAN DOUBLE LIKE IRBINFRA, TATAMOTORS LIKE, EDUCOMP, .OFSS, HAVELLS & MANY MORE

SL	CONTENTS
1	NIFTY TARGET FOR 2010
2	SECTORS IS IN NEWS
3	10/15 INVESTMENT PICS
4	PORTFOLIO MANAGEMENT
5	BUYING/SELLING/TARGET/SL
6	TECHNICAL OUT LOOK
7	FUNDAMENTAL OUT LOOK

NIFTY -RESISTANCE

1) 5288 IS VITAL RESISTANCE
2) ABOVE 5288 YOU WILL GET FIRST SYMPTON THAT MARKET LIKELY TO GO UP
3) FOR UP MOVE NIFTY RESIST AT 5300.
4) IF CLOSE ABOVE 5312 FOR TWO DAYS NIFTY WILL TAKE FRESH BREAKOUT AND RESIST AT 5340 AND 5360 LEVELS.

TREND DECIDER/PIVOTAL POINT

TREND DECIDER MEANS A CERTAIN LEVEL ABOVE WHICH MARKET LOOKS GOOD (APPARENTLY BUT NOT CONFIRMED) AND BELOW WHICH MARKET LOOKS BAD (APPARENTLY BUT NOT CONFIRMED).

NIFTY TREND IS 5220 ABOVE WHICH UPTREND IS INTACT AND PEOPLE LIKE TO BUY ON DIPS BUT BELOW IT PEOPLE ARE NOT INTERESTED TO BUY, THEREFORE MARKET LOSES ITS MOMENTUM.

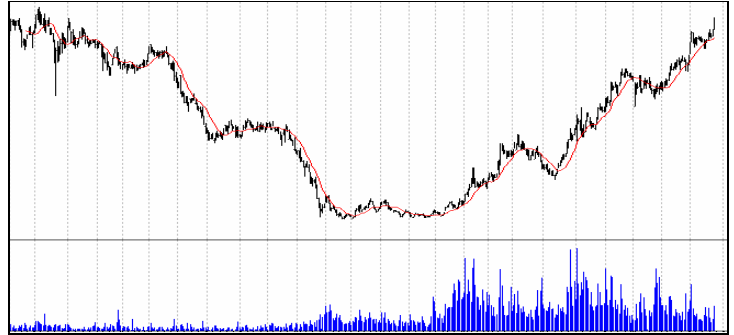
READ CAREFULLY

AS MARKET IS IN CONSOLIDATION ZONE AND EVERY DIPS IS BUYING OPPORTUNITY AND TRY TO BUY ON DIPS OTHERWISE YOU WILL BE TRAPPED AT HIGHER LEVELS.AS MARKET IS QUITE OVERBOUGHT, TRADE WITH SMALL QUANTITY WITH STRICT STOP LOSS.

TRADING SPOTLIGHT

TUBEINVEST

CMP-83
GOOD BUYING ZONE 77.
TARGET – 90 ?
STOP LOSS 70 BY CLOSING
TIME PERIOD- AT LEST 2 WEEKS



NATIONALUM

CMP-461
GOOD BUYING ZONE 442-420
TARGET – 488/500/516 ?
STOP LOSS 399 BY CLOSING
TIME PERIOD- AT LEST 3 WEEKS



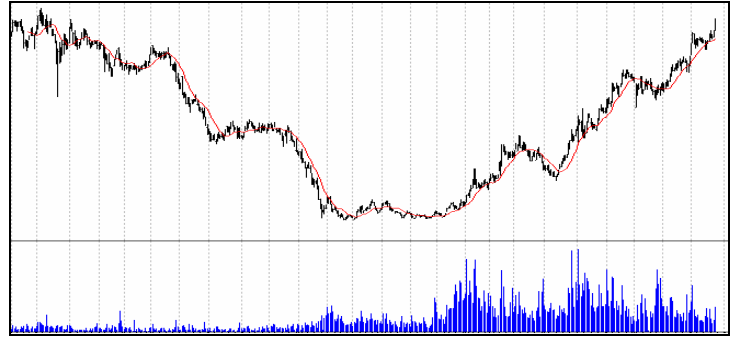
GANESHHOUC

CMP-149
GOOD BUYING ZONE 140-144.
TARGET – 160/168.
STOP LOSS 103 BY CLOSING
TIME PERIOD- 1 WEEK TO 3 WEEKS



NMDC

WE HAVE GIVEN DELIVERY AROUND 425 LEVELS AND NOW 493. THIS STOCK IS AGAIN GOOD PIC AROUND 450 LEVEL WITH A STOP LOSS OF 525 BY CLOSING. TARGET COMES AT 493 AND 510.



VALUE BUY

**PUNJLLOYD, RCOM. APTECH
EKC, DLF, RNRL**

ALL THESE STOCKS ARE FUNDAMENTALLY GOOD AND BIG MOVEMENT EXPECTED AT ANY TIME AS THY ARE IN NEWS. SO ALL THESE STOCKS SHOULD BE IN YOUR PORTFOLIO.



DEIVERY PERFORMANCE OF LAST MONTH

STOCKS NAME	RECORD DATE	GIVEN AT	RECENT HIGH	% UP
AARTIDRUGS	14.12.2009	95-98	115	21%
ABGSHIP	14.12.2009	185-190	301	63 %
ANSALHSG	14.12.2009	62-58	70	13 %
APIL	14.12.2009	562-555	615	11 %
FOURSOFT	14.12.2009	28-25	32	19 %
VISHALRET	14.12.2009	63-59	68	15 %
MASTEK	17.12.2009	360	423	18 %
MANAKSIA	17.12.2009	76-80	134	60 %
TATAELXSI	17.12.2009	217	315	NOT CAME
MIC	22.12.2009	42	55	31 %
ABIRLANUVO	27.12.2009	890	973	9 %
GAMMNINFRA	27.12.2009	17-19	26	37 %
HANUNG	27.12.2009	109-114	130	19 %
JAICORPLTD	27.12.2009	203	241	19 %
EKC	27.12.2009	144	162	12 %
AUSTRAL	27.12.2009	9	10.60	18 %

PUNJLLOYD	27.12.2009	202	226	12 %
RCOM	27.12.2009	175	193	10 %
MAYTASINFR	29.12.2009	160	212	33 %
GRASIM	31.12.2009	2470	2890	17 %
TATAPOWER	31.12.2009	1280	1518	19 %
HINDOILEXP	31.12.2009	275-282	321	10 %
NITINFIRE	31.12.2009	304	378	24 %
THINKSOFT	31.12.2009	310-315	447	42 %
COX&KINGS	31.12.2009	425	470	11 %
APTECHT	31.12.2009	185	206	11 %
ACC	31.12.2009	871	990	14 %
ESSARSHIP	31.12.2009	76	86	13 %
FCSOFT	04.01.2010	15	17.70	17 %
SELMCL	05.01.2010	82-86	105	24 %
DLF	07.01.2010	378	404	7 %
ONGC	07.01.2010	1207-1215	1246	4 %
ORCHIDCHEM	07.01.2010	180-190	202	10 %
PATNI	07.01.2010	478-487	530	11 %
RELIANC	07.01.2010	1080-1065	1148	7 %
RMEDIA	07.01.2010	86-90	96	7 %
IVC	07.01.2010	47-45	48	3 %
STAR	08.01.2010	250	262	5 %
UTTAMSTL	08.01.2010	130	140	7 %
PURVA	08.01.2010	97	121	21 %
GREENPLY	08.01.2010	170	190	12 %
AMTECHAUTO	08.01.2010	180	194	8 %
KTKBANK	10.01.2010	125-129	134	8 %
BGREENERGY	10.01.2010	528	564	7 %
IRB	11.01.2010	265	281	6 %
HOPFL	11.01.2010	90	97	8 %
JINDALSAW	11.01.2010	200	214	6 %
.REC	11.01.2010	252	274	9 %
BIRLACOT	12.01.2010	1.25	1.55	16 %

DISCLAIMER- Trading involves considerable risk. Trade at your own risk to the extent you are comfortable. The analyst and this site will not be responsible or liable for any losses incurred for acting on these recommendations. Writers may have their own position on the stock so recommended.