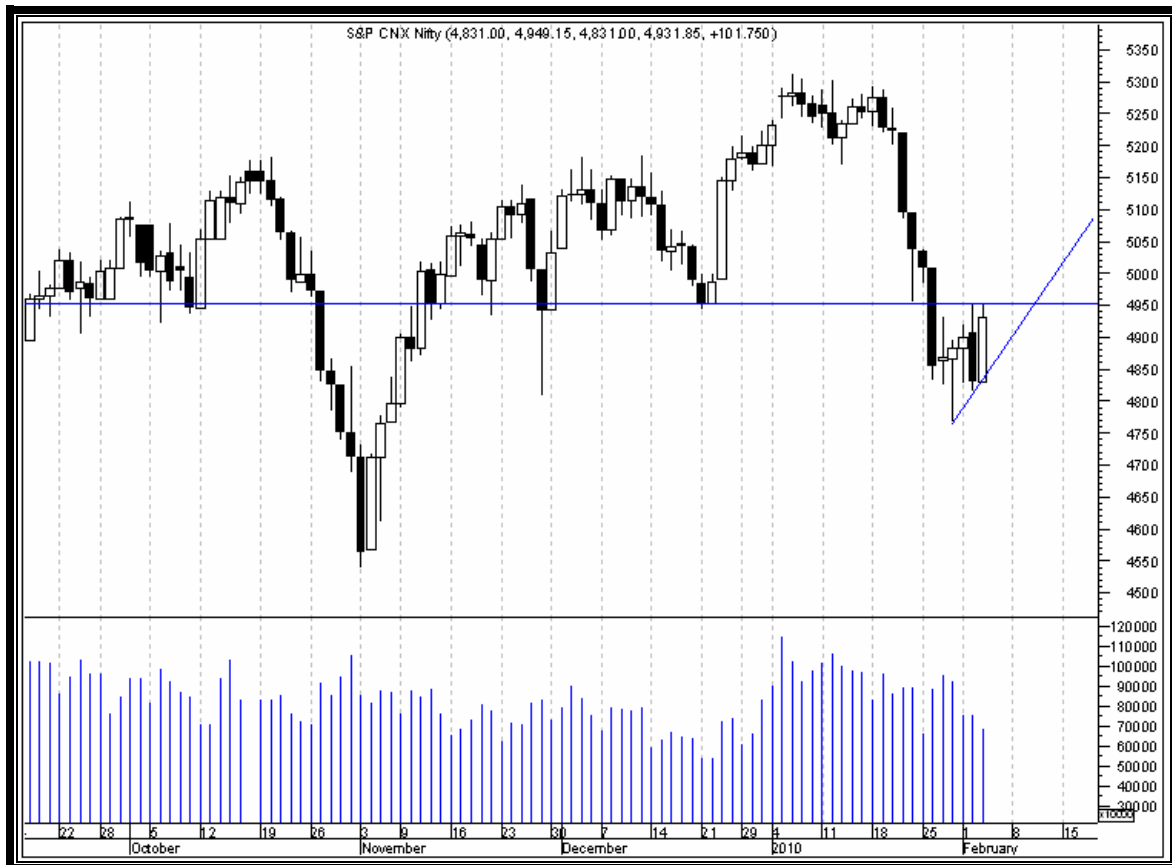


**STOCKS LOOKING HOT IN COMING DAYS TRADING SPOTLIGHT**  
**04.02.2010**



**NIFTY**  
**STILL NIFTY NOT ABLE TO TAKE BREAKOUT**  
**TODAY'S CLOSING VERY VITAL**  
**MUST ABOVE 4952 FOR 5035**

**NIFTY CLOSED AT 4932** – AS ON 04.02.2010 NIFTY MOVEMENT WAS PROMISING BUT MAIN ISSUE IS VOLUME. IF YOU NOTICED, FIRST HOUR STOCK MOVED VERY WELL BUT AFTER THAT THOUGH NIFTY WENT UP BUT STOCK WAS NOT MOVED UP UPTO THE MARK- DUE TO LOW VOLUME.

TECHNICALLY NIFTY REQUIRES 2 DAYS CLOSING ABOVE VITAL LEVELS 4920 AND NEED TO TRADE ABOVE 4952 IN INTRADAY BASIS. SO TODAY'S CLOSING IS VERY VITAL. LET DISCUSS THE STRATEGY-

NIFTY CLOSED IN SUCH A POSITION WHERE FROM MARKET MAY MAKE OR BREAK.

**FOR UP MOVE-**

1. FOR UP MOVE NIFTY NEED TO TRADE ABOVE 4952.

2. NIFTY MUST NOT BREAK 4918 IN INTRADAY BASIS AND MUST NOT CLOSE BELOW 4890.
3. IF NIFTY ABLE TO TRADE ABOVE 4952 THEN WE WILL ZOOM UP TO 5008/5036.??

**FOR DOWN MOVE-**

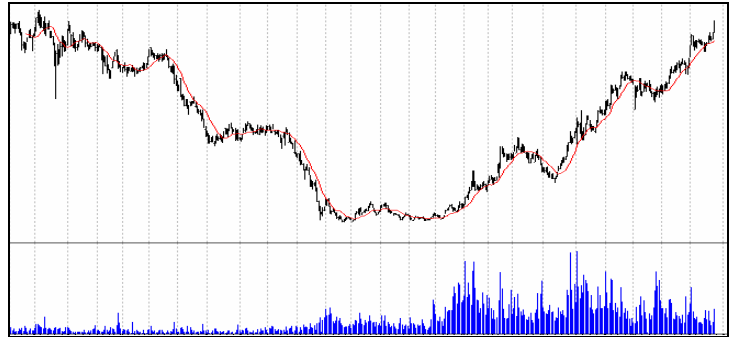
4. FOR DOWN MOVE NIFTY NEED TO TRADE BELOW 4918.
5. NIFTY MUST BREAK 4890.
6. IF NIFTY ABLE TO TRADE BELOW 4800 THEN WE TEST LOWER LEVELS

**STRATEGY – (NEED TO SEE WHETHER NIFTY ABOVE 4952 OR NOT ?)**

NIFTY TREND DECIDER 4938.UNLESS TRADE ABOVE 4952 SELLING PRESSURE / PROFIT BOOKING EXPECTED AT EVERY HIGH AND UNLESS TRADE BELOW 4890 BUY ON DIPS STRATEGY APPLICABLE.IF NIFTY TRADE ABOVE 4952 WE WILL CARRY OUR LONG POSITION AND IF NIFTY BREAKS 4890 THEN STOP BUYING AND WAIT FOR LOWER LEVES AND WE WILL INFORM YOU TIME TO TIME.

**BAJAJELEC**

**CMP-183**  
**GOOD BUYING ZONE 176.**  
**TARGET – 195.??**  
**STOP LOSS 165 BY CLOSING**



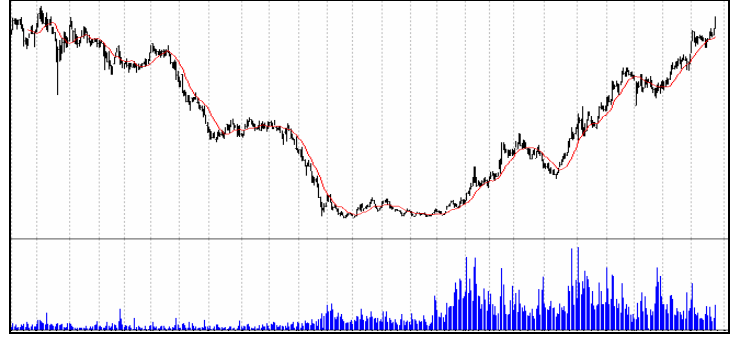
**BGREENERGY**

**CMP-502**  
**GOOD BUYING ZONE 485**  
**TARGET – 525/540/560??**  
**STOP LOSS 454 BY CLOSING**



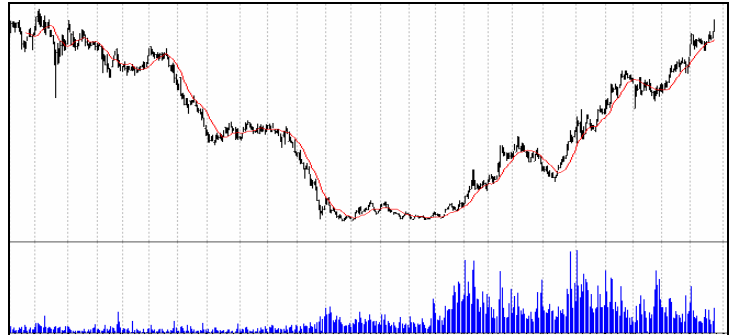
## INOXLEISUR

**CMP-85**  
**GOOD BUYING ZONE 83/79.**  
**TARGET – 88/92/97/!**  
**STOP LOSS 75 BY CLOSING**



## MICRO

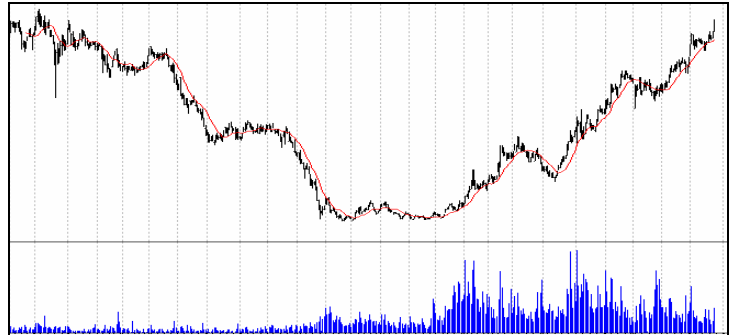
**CMP-632**  
**GOOD BUYING ZONE 625/600.**  
**TARGET – 655/680/???**  
**STOP LOSS 588 BY CLOSING**



## TECHNICALLY UP TREND

**TATASTEEL**  
**JSWSTEEL**  
**TCS**  
**ZYDUSWELL**  
**WIPRO**  
**SAIL**

**BUY ON DIPS STRATEGY APPLICABLE UNLESS  
AND UNTIL NIFTY ABOVE 4890.**



**WE WILL BUY UNLESS NIFTY BREAKS 4890 AND CLOSE BELOW IT.**

**DISCLAIMER-** Trading involves considerable risk. Trade at your own risk to the extent you are comfortable. The analyst and this site will not be responsible or liable for any losses incurred for acting on these recommendations. Writers may have their own position on the stock so recommended.